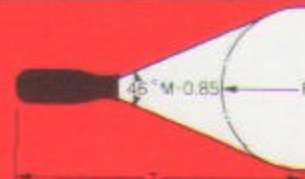


# Kliegl 400 Watt 3 1/2" Klieglight

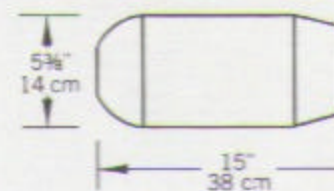
Kliegl Model 13



## QUICK SELECTOR GU



TYPICAL THROW DISTANCE  
3-6 meters; 10-20 feet  
Field Dia. (F) = Throw Distance (T)



Weight: 9 Lbs. 3.8 Kgs.

## SPECIFICATIONS

Ellipsoidal reflector spotlights to consist of an aluminum and sheet steel housing, ventilated so that the ambient temperature of the sockets shall not exceed 350°C. Access for relamping and maintenance is by means of hinged rear body with quick acting latch. Fixture support shall be a rigid iron yoke with "C" clamp for up to 2" pipe. Total fixture weight shall not exceed 9 pounds. Optical train shall contain a specular Alzak® aluminum, ellipsoidal reflector; pattern slot; four framing shutters of titanium alloy stainless steel with insulated adjustment handles; dual 3 1/2" diameter heat resisting plano-convex lenses and an adjustable lens tube for focusing. Electrical system to be grounded and consist of 2 single pole, recessed contact sockets (for a 400 watt, T3 tungsten halogen lamp) attached to 36" silicone rubber leads (UL type SF2, 200°C. rated) in high temperature sleeving and terminating in a 2 pole, 3 wire 20A pin connector. With a 400 watt, 250 hour lamp the unit shall produce a field angle of 46° which equals or exceeds 9,600 candlepower and shall meet all performance standards listed in the manufacturer's current catalog for this item. Unit to be KLIEGL #1340.

Provide \_\_\_\_\_ KLIEGL #1340 fixtures, each furnished with \_\_\_\_\_ color frame(s) and \_\_\_\_\_ lamp(s) with ANSI code # \_\_\_\_\_.

*Standard equipment Includes "C" clamp and 2 pole, 3 wire 20A pin connector. Lamps, color frames or other required accessories must be listed in the specification and will be furnished at additional cost.*

Fill in Project  
Information Here

## ACCESSORIES

11340	Standard Color Frame
31340	Pattern Holder
41340	Set of 16 Patterns
1850B	"C" Clamp (furnished as standard equipment)
1850C	18" "C" Clamp Side Arm
1415	18" Spoke Base Floor Sta
1420	19" Roller Caster Floor St
51340	Top Hat

For color changers, color wheels and special fasteners refer to Kliegl Accessories Catalog.

## CONNECTORS

955G	2 Pole 3 Wire 20A Pin Connector (furnished as standard equipment)
TLG	2 Pole 3 Wire 20A Twist



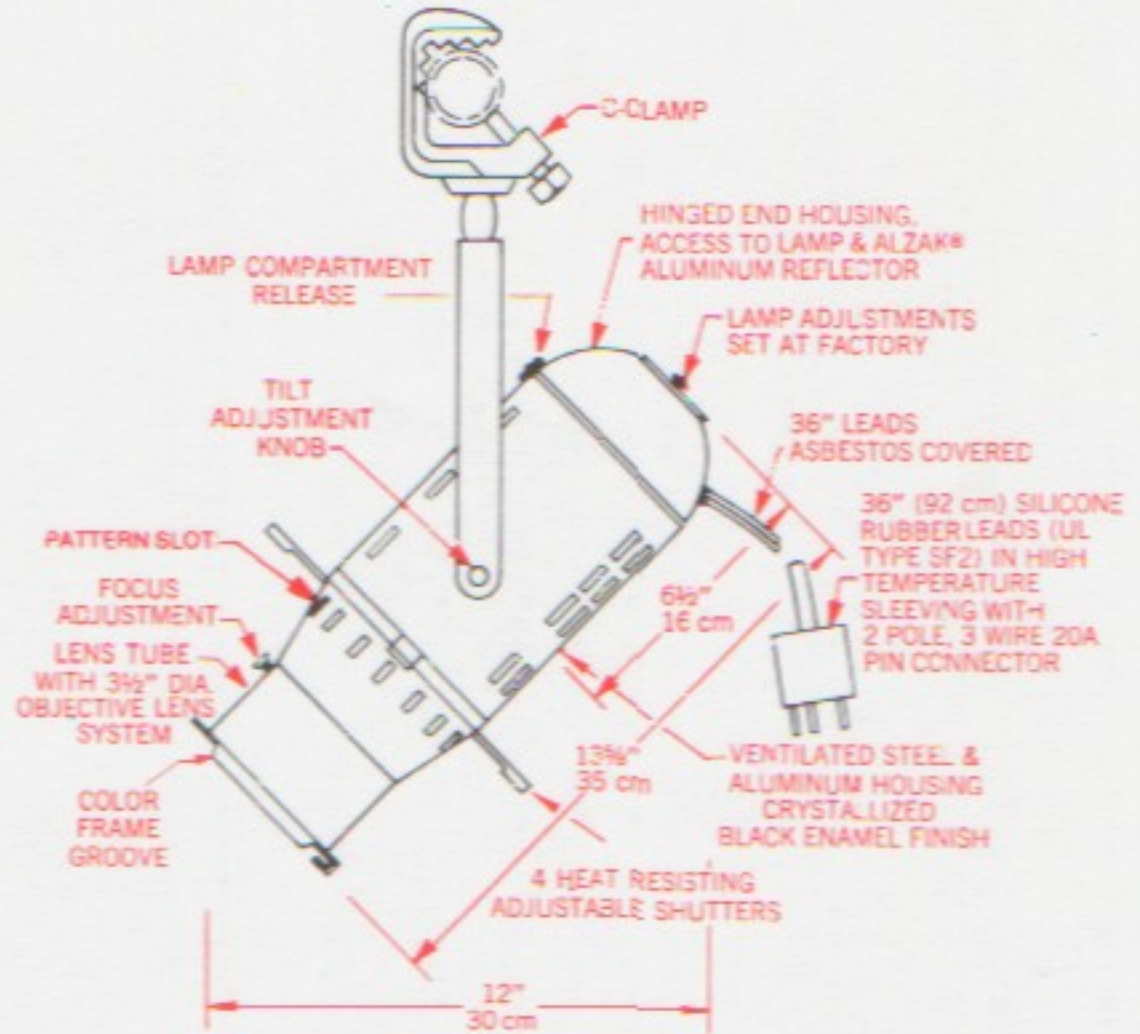
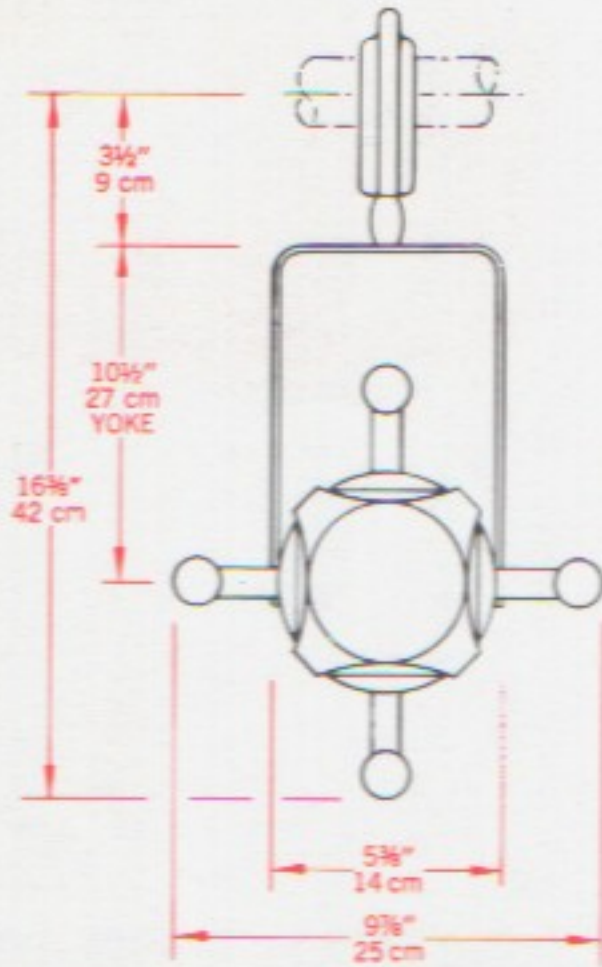
Kliegl Model 1340

400 Watt  
3 1/2" Klieglight

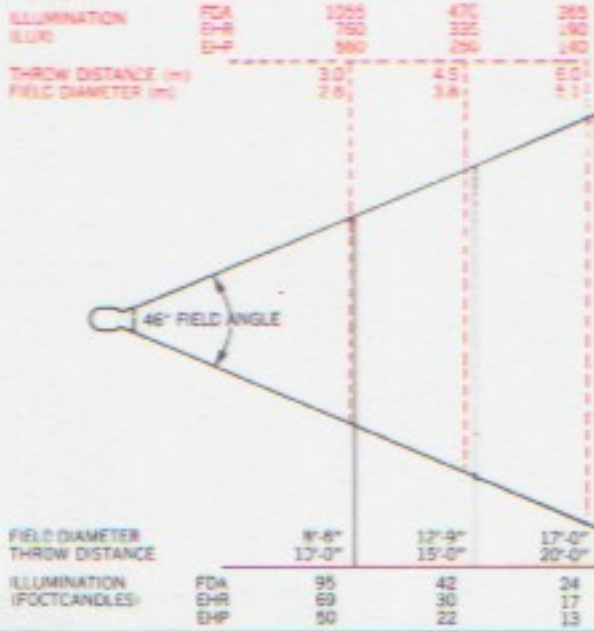
Data from ETL Report #413848

U.L. Listed and Labeled

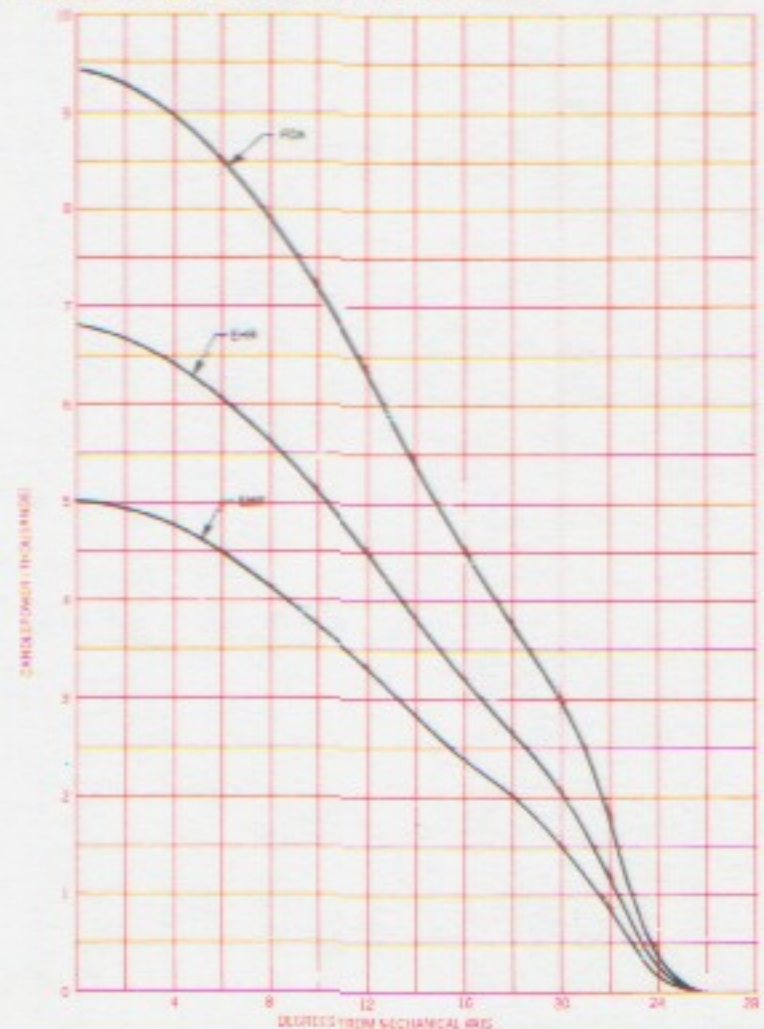
Union Made in the U.S.A.



THROW DISTANCE



CANDLEPOWER DISTRIBUTION CURVES

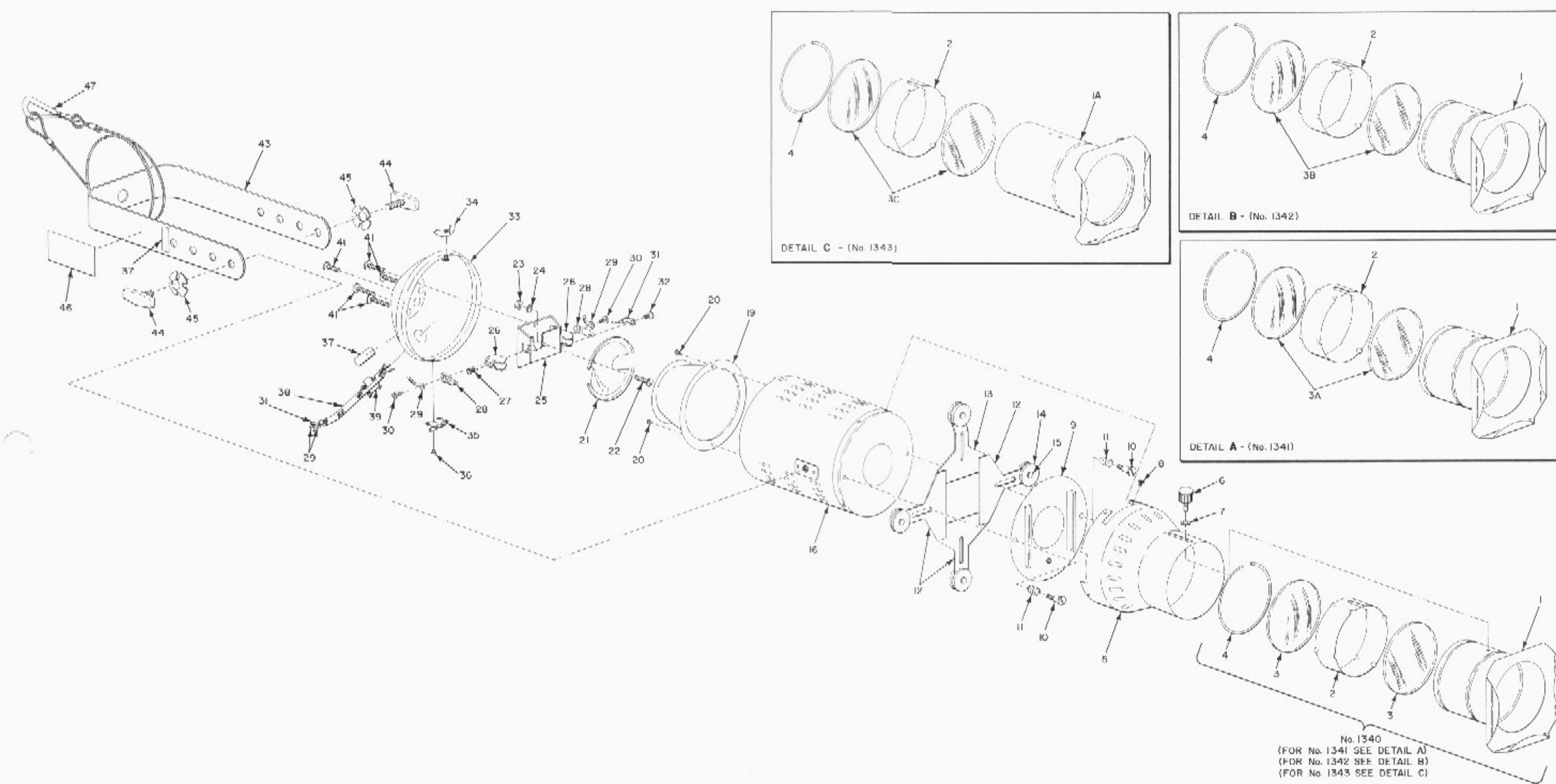


LAMP INFORMATION

LAMP ANSI CODE	WATTS	VOLTS	BULB	LIFE (HOURS)	°K	LUMENS
EHP	300	120	T-4	2000	3000	5,500
FCA	400	120	T-4	250	3200	10,400
EHR	400	120	T-4	2000	3000	7,500



# KLIEGL #1340



ITEM NO	DESCRIPTION	MFG. NO.	PART NO.	QUANTITY
1	3 1/2" LENS TUBE ASSEMBLY			1
1A	3 1/2" LENS TUBE ASSEMBLY			1
2	SPACER COLLAR			1
3	PLANO CONVEX LENS 3 1/2" x 5F			1
3A	PLANO CONVEX LENS 3 1/2" x 6F	2057		2
3B	PLANO CONVEX LENS 3 1/2" x 9F	2058		2
3C	PLANO CONVEX LENS 3 1/2" x 12F	2059		2
4	3 1/2" LENS RING	2060		2
5	3 1/2" LENS CONE			1
6	FOCUSING KNOB 8-32 x 1/2" STUD	KLP-828		1
7	WASHER-1/2" DIA.-1/4" HOLE	#244		1
8	MOUNTING SCREWS-#4 x 3/16" P.H.S.T.S.			1
9	PATTERN HOLDER PLATE			4
10	SHUTTER BLADE SHOULDER SCREW 8-32 x 1/2"	KLP-2033		1
11	SHUTTER BLADE SPRINGS	LEE #LC0451		2
12	SHUTTER BLADES			2
13	TOP SHUTTER BLADE			3
14	FIBRE DISK-1 1/2" DIA.			1
15	RIVET 3/8" x 3/8"			8
16	HOUSING ASSEMBLY			4
17				1
18				
19	FRONT REFLECTOR-MATTE FINISH	KLP-823		1
20	MOUNTING SCREWS #4 x 3/16" P.H.S.T.S.			2
21	REAR REFLECTOR-SPECULAR FINISH	KLP-820		1
22	REAR REFLECTOR SCREW 6-32 x 3/8" P.H.M.S.			1
23	HEX NUT-#6-32			1
24	LOCK WASHER #6			1
25	REFLECTOR & SOCKET MTG. BRACKET ASSY			1
26	PORCELAIN Q-SOCKET			1
27	MOUNTING SCREW #4-40 x 1/2" R.H.M.S.	SYL. #S-2		2
28	CONTACT SPRING ASSY	SYL. #S-2		2
29	SOCKET LEADS-39"-1 METER	SYL. #S-2		2
30	TERMINAL SCREW PHILLIPS HD. #4-40 P.H.M.S.	SYL. #S-2		2
31	GROUND WIRE LEAD 39"-1 METER			1
32	GROUND SCREW 8-32 x 3/8" P.H.M.S.			1
33	REAR HOUSING ASSY	KLP-831		1
34	WING NUT-10-32			1
35				
36				
37	UNION LABEL			1
38	FIBRE GLASS SLEEVING-3/8"-39"-1 METER			1
39	SQUEEZE CONN. 3/8"	TOMIC #100		1
40				
41	REAR FOCUSING SCREW-8-32 x 1" P.H.M.S.			4
42				
43	YOKE-1 1/2" x 1/8" HRS			1
44	TILT LOCKING KNOB-3/8"-16 x 3/8"	HD #3090		2
45	CLOVER LEAF SPRING WASHER-3/8"			2
46	IDENTIFICATION LABEL			1
47	SAFETY CABLE	#110		1

Kliegl Bros.  
32-32 48th Ave.  
Long Island City  
New York, 11101  
212-786-7474  
Telex: 960158

