

## Channel Mount



## Strand Distribution Systems

### Channel Mount Circuit Raceway

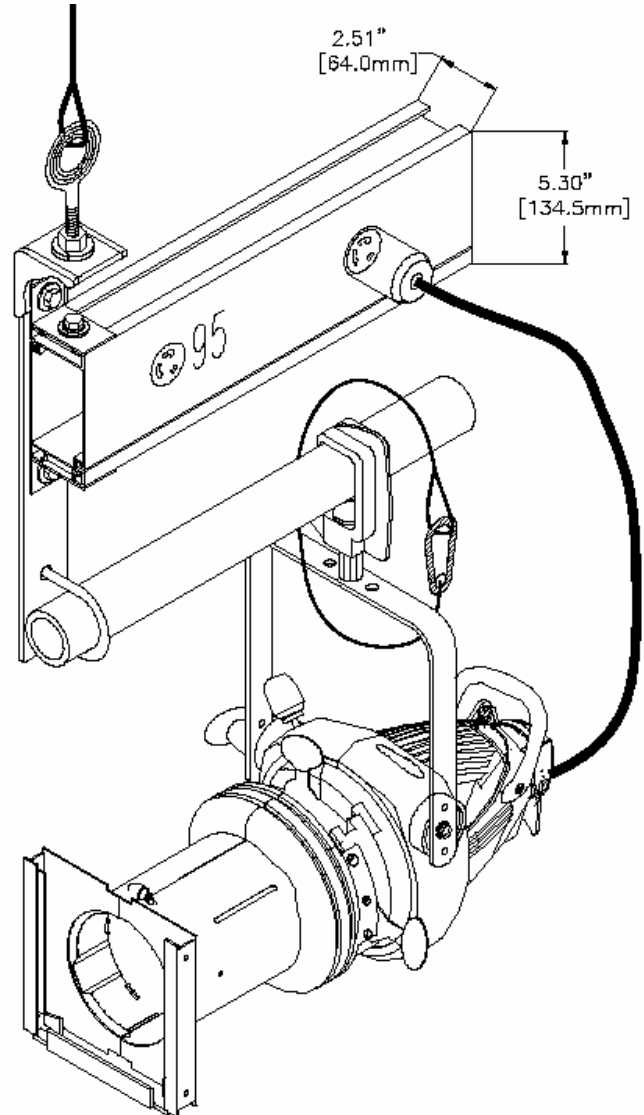
*Extruded Aluminum Raceway for circuit distribution & fixture mounting*

#### Applications:

- Theatres
- Television
- Schools
- Auditoriums
- Display Areas
- Museums
- Galleries

Channel Mount is a custom built plug in strip and wire way that has options for a lighting instrument mounting system. Made from heavy duty, corrosion resistant, extruded aluminum, the Channel Mount system is available in continuous lengths up to 90 feet with a 55 circuit capacity. Channel Mount is pre-wired for simple field connections.

- Channel Mount is listed by CSA and NRTL/C
- Finished Flat Black as Standard
- Non ferrous construction prevents AC induced noise or vibration
- Rugged pre-wired distribution system for feeding lighting equipment vertically or horizontally. Circuits are wired home run, receptacle to terminal strip for ease of installation and wiring
- Light weight for rigging load advantage
- Splice bars are supplied to ease assembly of long Channel Mounts segmented for ease of shipping
- A variety of hangers are available to suit most installations. Single and double pipe hangers are designed to accept 1-1/2 inch ID schedule 40 Pipe as the lighting instrument mounting system when using fixtures with standard "C-clamps".
- Available with 20A Twist lock or 15A U-Ground receptacles either flush mounted or "Pig Tail" - hanging on 18" flexible cable. Medium screw base swivel mount lamp holders may be specified.



#### Strand Lighting Inc

6603 Darin Way, Cypress, CA 90630, USA  
Tel: +1 714 230 8200 Fax +1 714 230 8173

#### Strand Lighting (Canada)

#### Inc/Eclairages Strand (Canada) Inc

2430 Lucknow Drive No 15  
Mississauga Ontario L5S 1V3 Canada  
Tel: +1 905 677 7130 Fax: +1 905 677 6859



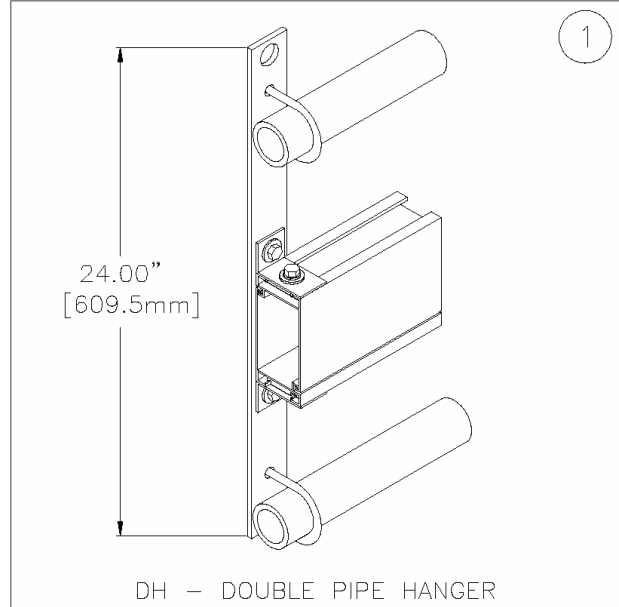
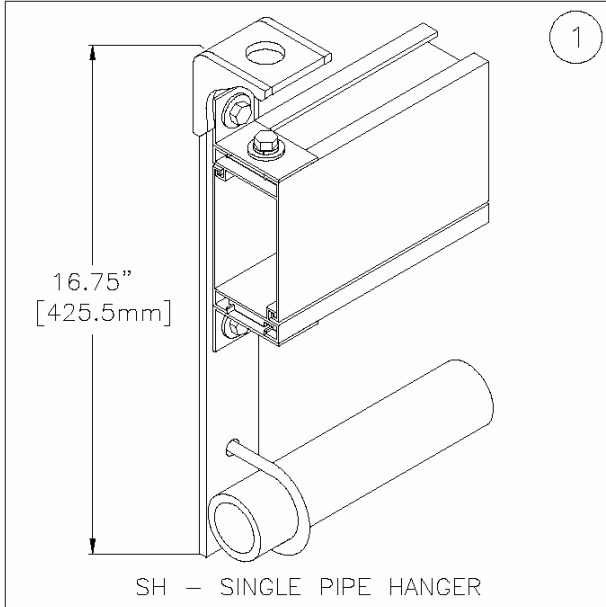
The Company reserves the right to make any variation in design or construction to the equipment described.  
© Strand Lighting Ltd. 2002  
Strand™, Strand Lighting™, Strand Quartzcolor™ are trademarks of Strand Lighting Limited and Strand Lighting Inc.

# Channel Mount

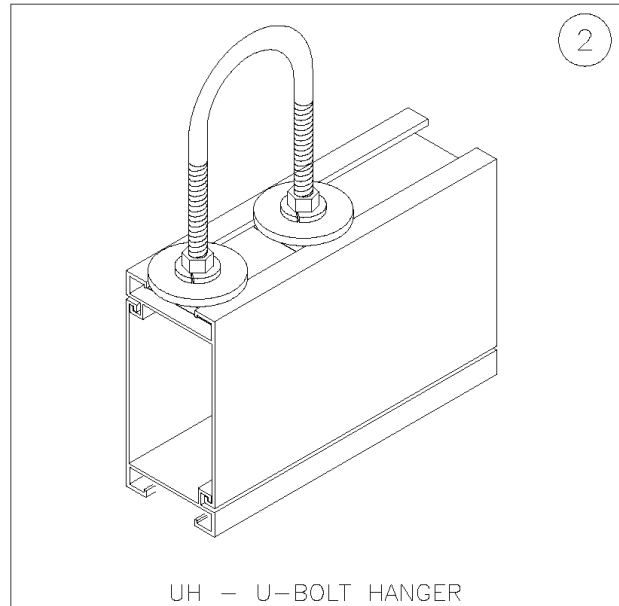
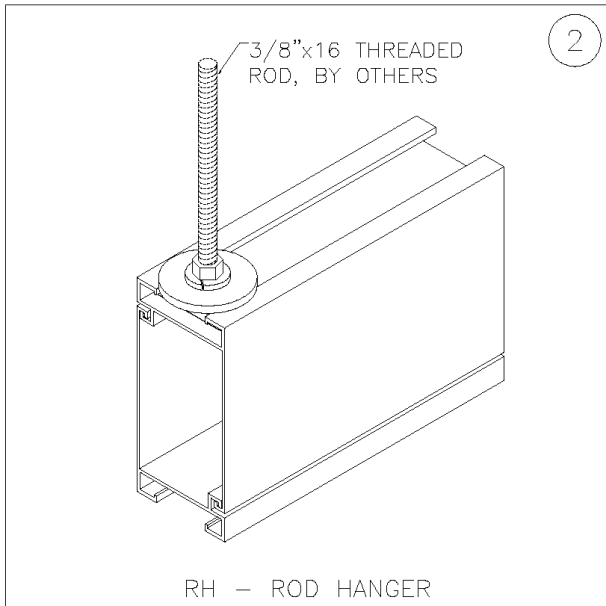


## Strand Distribution Systems

### Hanging & Mounting Solutions



*Single Pipe Hanger, (Load method #1), (can be used as Grid hanger above pipe) and Double Pipe Hanger are designed to carry fixture load on the pipe only.*



*Rod Hanger and U-Bolt Hanger, (Load method #2) are not designed to carry fixture loads.*

**Strand Lighting Inc**  
6603 Darin Way, Cypress, CA 90630, USA  
Tel: +1 714 230 8200 Fax +1 714 230 8173

**Strand Lighting (Canada) Inc/Eclairages Strand (Canada) Inc**  
2430 Lucknow Drive No 15  
Mississauga Ontario L5S 1V3 Canada  
Tel: +1 905 677 7130 Fax: +1 905 677 6859



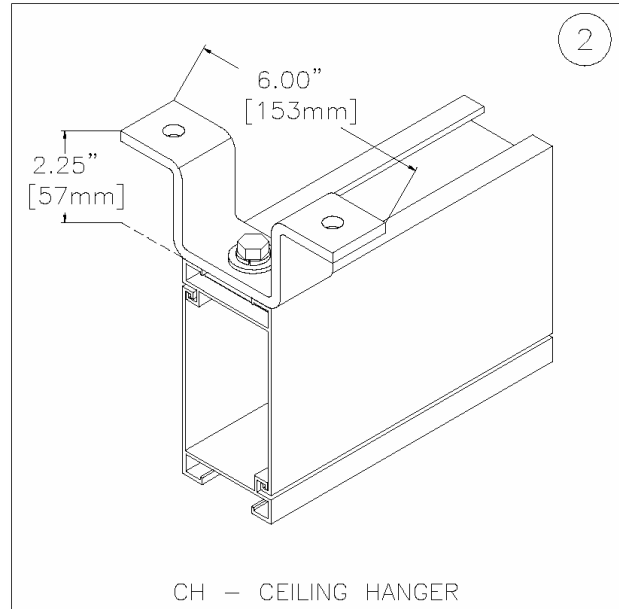
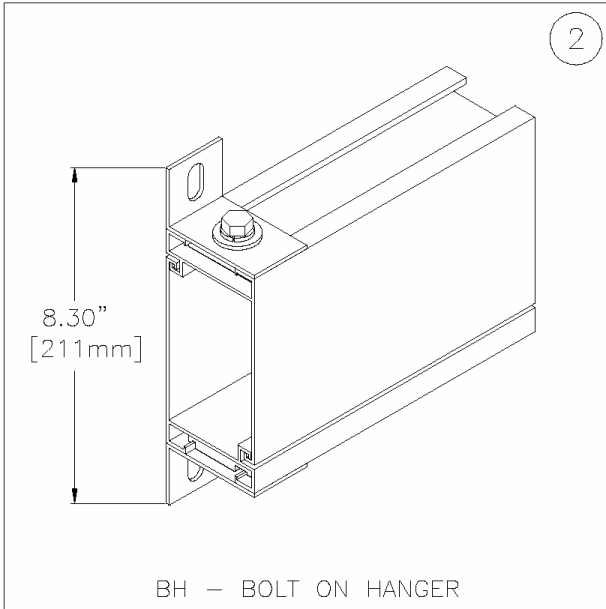
The Company reserves the right to make any variation in design or construction to the equipment described.  
© Strand Lighting Ltd. 2002  
Strand™, Strand Lighting™, Strand Quartzcolor™ are trademarks of Strand Lighting Limited and Strand Lighting Inc.

# Channel Mount

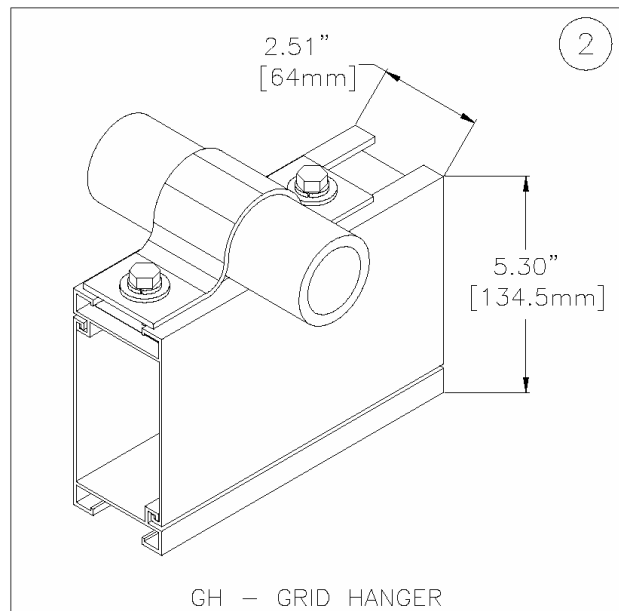
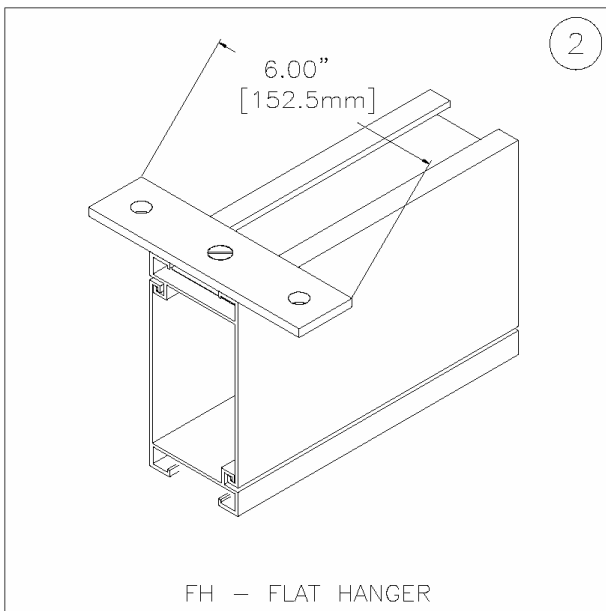


## Strand Distribution Systems

### Hanging & Mounting Solutions



*Bolt On Hanger and Ceiling Hanger are not designed to carry fixture loads.*



*Flat Hanger and Grid Hanger are not designed to carry fixture loads.*

**Strand Lighting Inc**  
6603 Darin Way, Cypress, CA 90630, USA  
Tel: +1 714 230 8200 Fax +1 714 230 8173

**Strand Lighting (Canada) Inc/Eclairages Strand (Canada) Inc**  
2430 Lucknow Drive No 15  
Mississauga Ontario L5S 1V3 Canada  
Tel: +1 905 677 7130 Fax: +1 905 677 6859



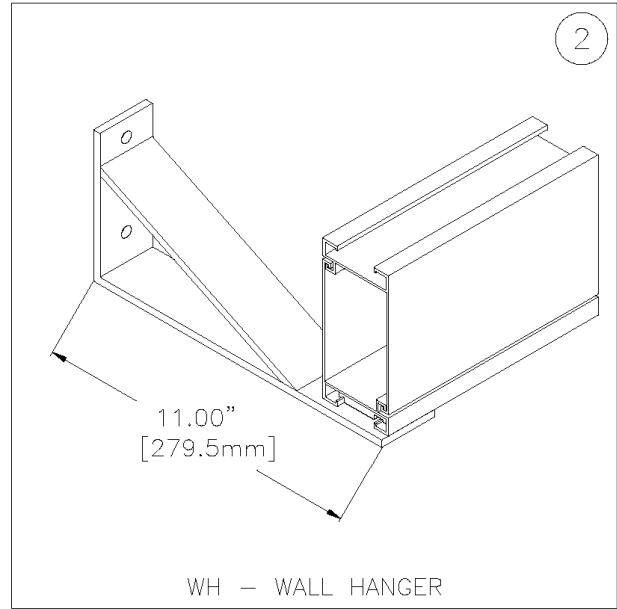
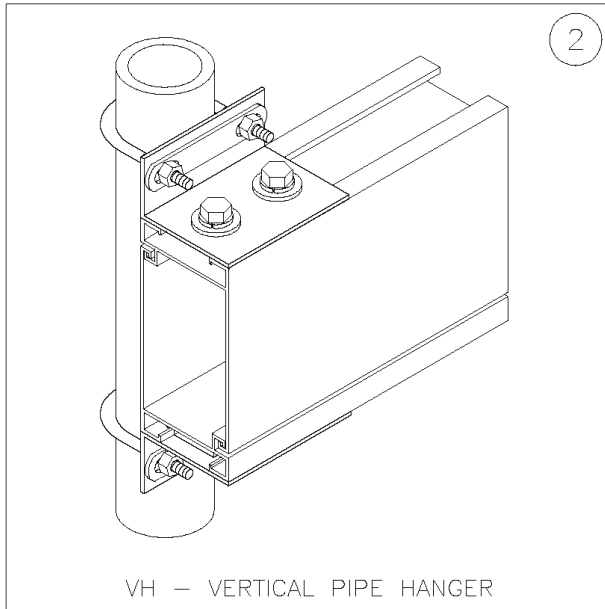
The Company reserves the right to make any variation in design or construction to the equipment described.  
© Strand Lighting Ltd. 2002  
Strand™, Strand Lighting™, Strand Quartzcolor™ are trademarks of Strand Lighting Limited and Strand Lighting Inc.

# Channel Mount



## Strand Distribution Systems

### Hanging & Mounting Solutions



*Vertical Pipe Hanger and Wall Hanger are not designed to carry fixture loads.*

### Ordering Information:

Overall Length Of Channel		In Meters
Number of circuits		Considering 18" spacing
Number of receptacles		20A Twist lock or 15AU-Ground
Connector Mounting		Flush or Pigtail (typically 18")
Finish		Black is Standard
Hangers		Specify

Note: Hangers are automatically calculated based on one every six feet.

Note: 1-1/2" ID Schedule 40 Pipe, (if required) is not supplied by Strand Lighting (Canada)

**Strand Lighting Inc**  
6603 Darin Way, Cypress, CA 90630, USA  
Tel: +1 714 230 8200 Fax +1 714 230 8173

**Strand Lighting (Canada)  
Inc/Eclairages Strand (Canada) Inc**  
2430 Lucknow Drive No 15  
Mississauga Ontario L5S 1V3 Canada  
Tel: +1 905 677 7130 Fax: +1 905 677 6859



The Company reserves the right to make any variation in design or construction to the equipment described.  
© Strand Lighting Ltd. 2002  
Strand™, Strand Lighting™, Strand Quartzcolor™ are trademarks of Strand Lighting Limited and Strand Lighting Inc.